



47 Marsham Street, Westminster  
London SW1P

GARTON JONES.COM





47 Marsham Street, Westminster  
London, SW1P

GARTON JONES.COM

49 Marsham Street Sales +44 (0) 20 7340 0480  
London westminster@gartonjones.com  
SW1P 3DP www.gartonjones.com

£800 Per Week

We are pleased to offer this 2 bedroom apartment available to rent in this popular development in the heart of Westminster. The internal living space comprises of an open plan reception room, a modern open plan kitchen, 2 bedrooms both with fitted wardrobes and the master benefitting from an en-suite and further guest bathroom. As a resident of Romney House you will also have the use of a 24 hour concierge and a well-equipped gymnasium. The development is extremely convenient for access to many of the renowned local landmarks which include the Houses of Parliament, Westminster Abbey, Tate Britain Gallery and the River Thames. The local transport links of Victoria Station is nearby providing mainline UK services including the Gatwick Express as well as the underground services of Victoria, Pimlico, St James Park and Westminster. The area has an abundance of amenities such as Sainsbury's, Waitrose, Marks & Spencer's and a Curzon Cinema plus following on from the extensive regeneration of Victoria street a selection of many new restaurants to compliment existing ones such as The Vincent Rooms, The Cinnamon Club, Osteria Dell'angolo and many more. Just a short walk away is the Chelsea College of Arts and St Johns Smith Square Concert Halls offering a variety of classical musical performances.

Minimum Term 12 Months

Deposit 5 Weeks

Council Tax Band F (London Borough of Westminster)

EPC Rating: D (61)

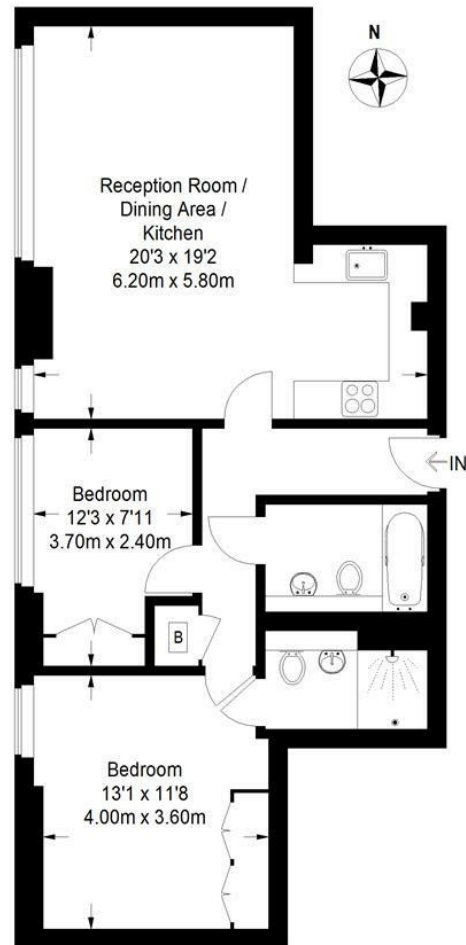
- 2 Bedroom Apartment
- 753 Square Feet (70 Sq. M)
- Open Plan Reception Room
- Modern Kitchen
- 2 Bathrooms (En-Suite)
- Available: 6th September 2025
- 24 Hour Concierge and Resident Gymnasium
- Close to Local Amenities
- Walking Distance to St James's Park, Westminster & Victoria Rail/Tube Links



EPC certificate available on request.

## Romney House

Approximate Gross Internal Area  
753 sq ft / 70 sq m



First Floor

Not to scale, for guidance only and must not be relied upon as a statement of fact.  
All measurements and areas are approximate only and have been prepared in  
accordance with the current edition of the RICS Code of Measuring Practice.

